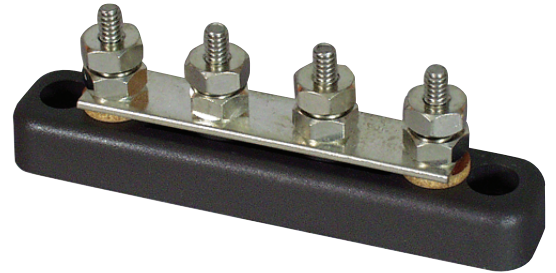


# auto electrical parts

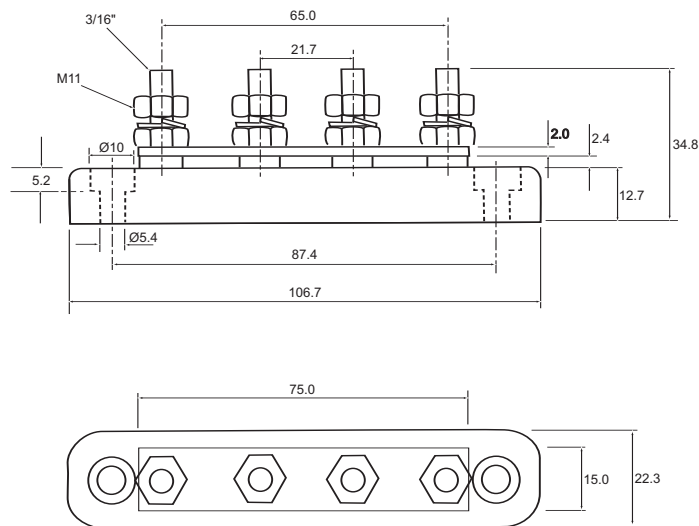
## Technical Information Sheet

### Part No 0-005-51

Bus bar, 100 amp, tin plated copper bar with 4 stainless steel 3/16" UNF studs. ABS insulating base with recessed 5mm mounting holes. Rated at 100 amp at 48 volt dc.



### Technical Drawing (not to scale)



### Specification

Type	Bus Bar
DC rating @ 48vdc	Continuous 100 amps
Bolts	4 x 3/16" UNF stainless steel studs with 7/16" nuts and spring washer
Bar Material	Tin-plated copper
Base	ABS
Fixing	2 x recessed 5.4mm fixing holes, centres 87.4mm
Weight	85.0g
Dimensions	l 106.7 x w 22.3 x h 34.8mm

The information contained in this document is correct to the best of our knowledge at the time of printing. However, specifications may change at any time without notice.